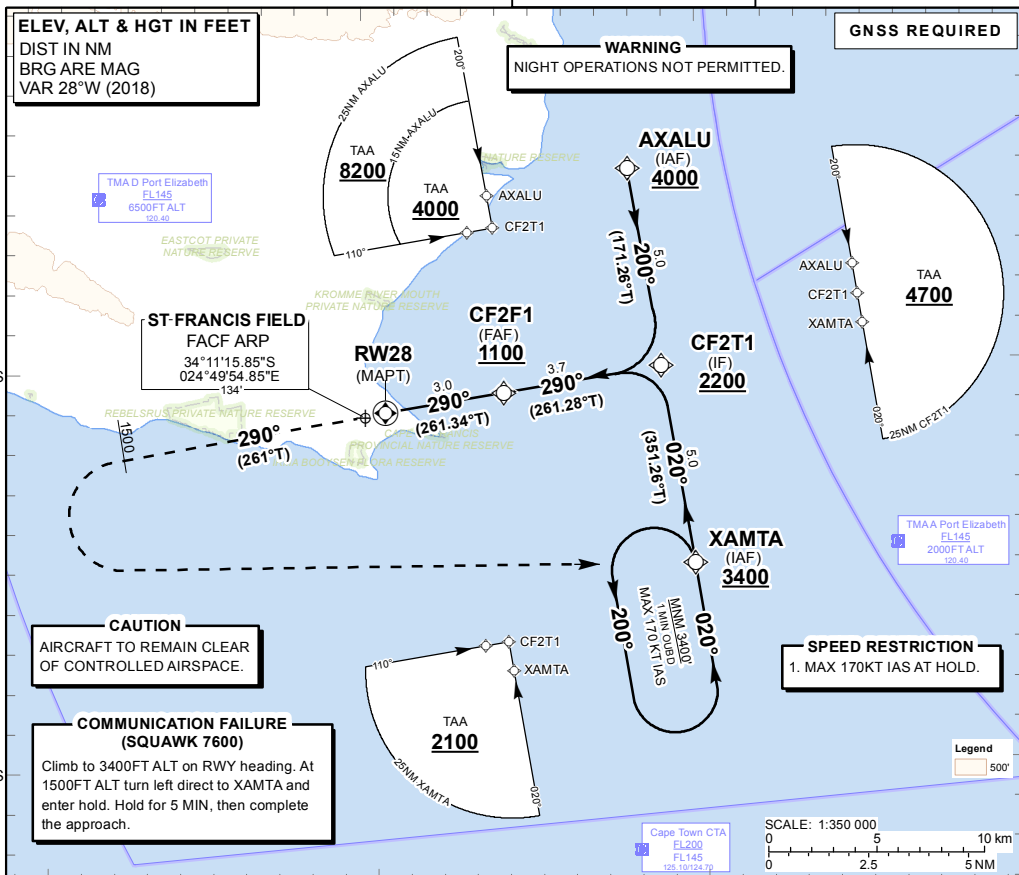


**INSTRUMENT
APPROACH
CHART - ICAO**

**AERODROME ELEV 134'
HEIGHTS RELATED TO
THR RWY 28 - ELEV 113'**

ATIS: 126.80
PORT ELIZABETH APP: 120.40

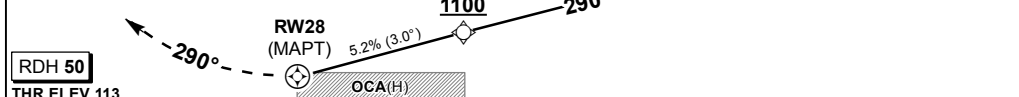
**ST FRANCIS FIELD
RNAV (GNSS) RWY 28
CAT A - B**



	24°40'E	24°50'E	25°0'E					
DIST (NM) TO THR 28	6.5	6	5	4	3	2	1	
ADVISORY ALT (HGT)	2200 (2087)	2040 (1927)	1730 (1617)	1420 (1307)	1100 (987)	790 (677)	480 (367)	

**TRANSITION ALT 8500
TRANSITION LEVEL FL095**

MISSED APPROACH:
Climb to 3400FT ALT on RWY track. At 1500FT ALT turn left direct to XAMTA and enter the hold.



THR ELEV 113	NM to/from THR RWY 28												
MIN TEMP: 0°C / MAX TEMP: 34°C	0	1	2	3	4	5	6	7	8	9	10	11	12

Straight-in Approach	OCA (H)	A	B	GS	KT	80	100	120	140	160	180
	2.5%	850 (737)	850 (737)	CF2F1 to RWY28	M:S	2:15	1:48	1:30	1:17	1:07	1:00
	RVR	1500m	1500m	Rate of descent	FPM	416	521	625	729	833	937
	ALS OUT	1500m	1500m	NOTE:							
Circling	850 (716)	850 (716)	1. MAPT at THR 28. 2. Turns prior MAPT prohibited. 3. Circling Minimas apply due to Aerodrome Infrastructure.								