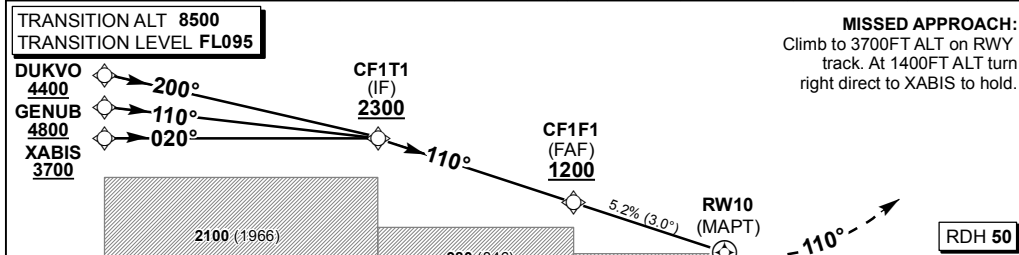


	24°40'E	24°50'E	25°0'E	
DIST (NM) TO THR 10	3.2	3	2	1
ADVISORY ALT (HGT)	1200 (1066)	1140 (1006)	820 (686)	510 (376)



CHANGE: NEW Procedure

MIN TEMP: 0°C / MAX TEMP: 34°C		THR ELEV 134 NM to/from THR RWY 10														
Straight-in Approach	OCA (H)	A	B	GS	KT	80	100	120	140	160	180					
	2.6%	850 (716)	850 (716)	CF1T1 to RW10	M:S	2:24	1:55	1:36	1:22	1:12	1:04					
	2.5%	900 (766)	900 (766)	Rate of descent	FPM	423	529	635	741	847	953					
	RVR	1500m	1500m	NOTE:												
ALS OUT	1500m	1500m	1. MAPT at THR 10. 2. Turns prior MAPT prohibited. 3. Circling Minimas apply due to Aerodrome Infrastructure.													
Circling	850 (716)	850 (716)														